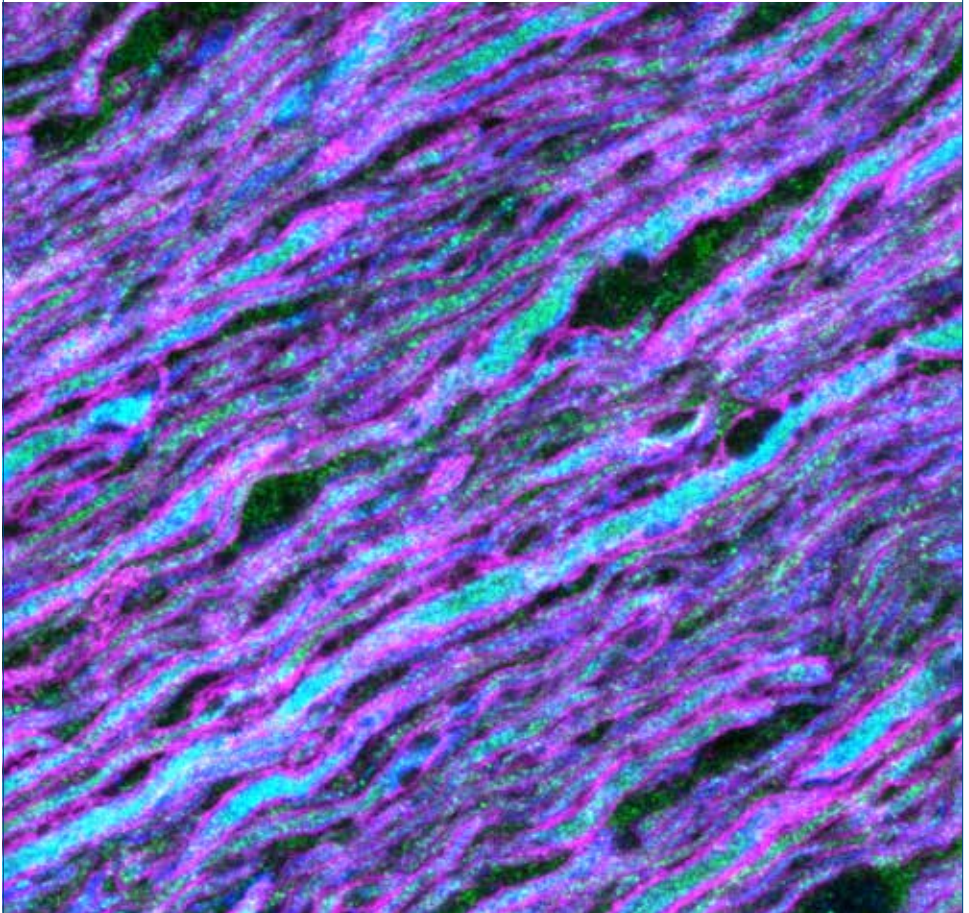


NEUROSCIENCE  
**2018**

# Trainee Professional Development Awards Poster Session

Saturday, November 3  
6:30–8:30 p.m.

San Diego Convention Center, Hall A



---

**PLEASE NOTE:** Odd numbered posters will be presented 7–7:45 p.m.; even numbered posters will be presented 7:45–8:30 p.m. Presenters are encouraged to network and visit other presenters' posters when they are not presenting.

The Trainee Professional Development Awards Poster Session is supported by *eNeuro* and *JNeurosci*.

*SfN gratefully acknowledges contributions from the following Trainee Professional Development Awards supporters:*

Burroughs Wellcome Fund  
Friends of SfN Fund  
Genentech  
Inscopix  
Nancy Rutledge Zahniser Fund  
Novartis Institutes for Biomedical Research  
Pfizer  
Sanofi  
Society for Neuroscience  
William Mobley, MD, PhD

## A: Development

### **Samantha Baglot** JJJ 33

Social isolation stress alters the expression of hippocampal neurogenesis in adolescent animals prenatally exposed to alcohol

**University of Calgary**  
*Graduate Student*

### **Kinga Bercsenyi** JJJ 32

To be, or not to be — neuronal death during development

**King's College London**  
*Postdoctoral Fellow*

### **Tyler Bielinski** JJJ 31

Differing effects of hypoxia on development of dopaminergic neurons in the developing zebrafish

**University of Scranton**  
*Undergraduate Student*

### **Morgan Bridi** JJJ 30

Inhibitory synaptic transmission by parvalbumin-positive interneurons is perturbed in Cntnap2-KO autism model mice

**Hussman Institute for Autism**  
*Postdoctoral Fellow*

### **Huijie Feng** JJJ 29

A mouse model for GNAO1-associated movement disorder

**Michigan State University**  
*Graduate Student*

### **Nancy Gallus-Carullo** JJJ 28

Enhancer RNAs are necessary and sufficient for gene transcription and neuronal function

**University of Alabama at Birmingham**  
*Graduate Student*

### **Raphael Geddert** JJJ 27

Adolescents and young adults with autism spectrum disorder show specific impairments in cognition

**University of California, Davis**  
*Undergraduate Student*

### **Ryan Griggs** JJJ 26

The diabetes-related metabolite methylglyoxal induces axon initial segment shortening

**Wright State University**  
*Postdoctoral Fellow*

### **Serena Gumusoglu** JJJ 25

Chronic prenatal interleukin-17 is sufficient to cause sex-specific ASD-phenotypes in a mouse model

**University of Iowa**  
*Graduate Student*

### **Samantha Hodges** JJJ 24

Cytokine expression and sickness behavior following lipopolysaccharide stimulation in the Fmr1 knockout mouse

**Baylor University**  
*Graduate Student*

### **Camille Juzwik** JJJ 23

Inhibition of miR-383 promotes axon regeneration following injury

**McGill University**  
*Graduate Student*

### **Zsafia Kovacs-Balint** JJJ 22

Development of amygdala-prefrontal cortex circuits in primates: A longitudinal neuroimaging study in infant macaques

**Emory University**  
*Postdoctoral Fellow*

## Kelsey Lloyd

JJJ 21

Adolescent high fat diet impairs motivation and disrupts prefrontal cortex gene expression in adulthood

**University of Cincinnati**

*Graduate Student*

## Melissa Martin

JJJ 20

Brain and behavioral consequences of developmental nicotine exposure in a GAD67-GFP mouse model

**Florida State University**

*Graduate Student*

## Veronica Mucciarone

JJJ 19

Differential brain activation of OPRM1 genotypes in response to reward during early adolescence

**Georgetown University**

*Undergraduate Student*

## Lauren Neal

JJJ 18

Homology in Gyf gene maintains neuron cell homeostasis in *Drosophila melanogaster* and *Drosophila eugracilis*

**Agnes Scott College**

*Undergraduate Student*

## Bart Nieuwenhuis

JJJ 17

Elevated phosphoinositide 3-kinase activity promotes axon regeneration of central nervous system neurons

**University of Cambridge**

*Graduate Student*

## Suzanne Nolan

JJJ 16

Dietary rescue of adult behavioral deficits in the Fmr1 knockout mouse

**Baylor University**

*Graduate Student*

## Maya Opendak

JJJ 15

Developmental psychopathology after maltreatment and disordered attachment within the Strange Situation Test: Insights from an animal model

**New York University Langone Medical Center**

*Postdoctoral Fellow*

## Louis-Jan Pilaz

JJJ 14

Dynamic RNA localization and local translation in the radial glial cells of the mammalian brain

**Duke University Medical Center**

*Postdoctoral Fellow*

## Hércules Freitas

JJJ 13

CB1/2 receptor activation induces death of chick embryonic retinal cells

**Universidade Federal do Rio de Janeiro**

*Graduate Student*

## Maria Ryazantseva

JJJ 12

The role of kainate receptors in the development of amygdala internal glutamatergic circuit in neonatal rats

**University of Helsinki**

*Postdoctoral Fellow*

## Sophie Schwartz

JJJ 11

Response to own name in noise differs in autistic adolescents with severe language impairments

**Boston University School of Medicine**

*Graduate Student*

## Morgan Sherer

JJJ 10

An investigation into the long-term impact of prenatal zika virus infection on the developing brain using a rat model of maternal infection

**University of Delaware**

*Graduate Student*

**Leonid Yermakov**

JJJ 9

Structural changes in axon initial segment in diabetic brain

**Wright State University**  
*Graduate Student*

**Chantel Charlebois**

JJJ 3

Validating cortical surface electrode localization uncertainty with simulation and clinical stimulation

**University of Utah**  
*Graduate Student*

**B: Neural Excitability, Synapses, and Glia**

**Scott Alpizar**

JJJ 8

Loss of NF-186 alters the distal accumulation of sodium channels within the axon initial segment

**Dartmouth College**  
*Graduate Student*

**Caroline Cvetkovic**

JJJ 2

Investigating human neuron-astrocyte functional interactions using a bioengineered 3D coculture platform

**Houston Methodist Research Institute**  
*Postdoctoral Fellow*

**Arielle Baker**

JJJ 7

Patterns of presynaptic connectivity and modulation in the mouse medial prefrontal cortex

**Dartmouth College**  
*Graduate Student*

**Brionna Davis-Reyes**

JJJ 1

Role of medial prefrontal cortex NMDA receptors in inherent impulsivity

**University of Texas Medical Branch, Galveston**  
*Graduate Student*

**Mora Belén Ogando**

JJJ 6

Cholinergic modulation reorganizes dentate gyrus microcircuits

**University of Buenos Aires**  
*Graduate Student*

**Margaret DeMaegd**

III 68

Differential current accumulation from antidromic action potentials modulates stimulus encoding

**Illinois State University**  
*Graduate Student*

**P. Lorenzo Bozzelli**

JJJ 5

The role of PAR-1 activation in sharp wave ripple event frequency

**Georgetown University**  
*Graduate Student*

**Beatrice D’Orsi**

III 67

The role of the Mitochondrial Ca<sup>2+</sup> Uniporter (MCU) in the pathogenesis of Alzheimer’s disease.

**University of Padua**  
*Postdoctoral Fellow*

**Colleen Carpenter**

JJJ 4

A novel zebrafish model of GABRB3-linked childhood epilepsy

**University of California, San Francisco**  
*Postdoctoral Fellow*

**Larissa Erben**

III 66

Analysis of neurodevelopment and schizophrenia-relevant behaviors in ErbB4 mutant mice lacking the Cyt-1 isoform

**Graduate Student Partnership Program, National Institutes of Health and University of Bonn**  
*Graduate Student*

- Nicholas Gallo** III 65  
Axo-axonic innervation of neocortical pyramidal neurons by GABAergic chandelier cells requires ankyrinG-associated L1CAM  
**Cold Spring Harbor Laboratory/ Stony Brook University**  
*Graduate Student*
- Wei Huang** III 64  
Higher-order visual thalamus orchestrates cortico-cortical synchronization during sustained attention  
**University of North Carolina at Chapel Hill**  
*Graduate Student*
- Hada Fongha leong** III 63  
Desynchronized lower alpha rhythms were associated with functional ischemia in the prefrontal cortex in heroin patients after protracted abstinence: a concurrent EEG-fNIRS study  
**University of Macau**  
*Graduate Student*
- Ashley Ingiosi** III 62  
Astroglial contributions to sleep homeostasis  
**Washington State University**  
*Postdoctoral Fellow*
- Marek Kowalski** III 61  
Ketamine trapping inside of NMDA channels affects spiking dynamics in Hodgkin-Huxley-like models  
**Boston University**  
*Graduate Student*
- Andrew Lapato** III 60  
Remodeling of GABAergic innervation may contribute to cortical hyperexcitability and seizures in chronically demyelinated mice  
**University of California Riverside School of Medicine**  
*Graduate Student*
- Jordan Logue** III 59  
Effects of social isolation rearing and ketamine on hippocampal synaptic plasticity  
**Florida State University**  
*Graduate Student*
- Ketan Marballi** III 58  
EGR3 is required for activity dependent Bdnf exon IV and VI induction in the mouse hippocampus  
**University of Arizona College of Medicine**  
*Postdoctoral Fellow*
- Aditya Nair** III 57  
Cell-type specific cholinergic modulation of the claustrum  
**National University of Singapore**  
*Undergraduate Student*
- Rosana Penalva** III 56  
Role of regulatory T cells in remyelination following cuprizone-induced demyelination  
**Max Planck Institute for Psychiatry, Germany; Universidad de Buenos Aires**  
*Postdoctoral Fellow*
- Austin Ramsey** III 55  
Dynamic control of synaptic substructure and function by adhesion molecules  
**University of Maryland, Baltimore**  
*Graduate Student*
- Armando Salinas** III 54  
Direct simultaneous comparison of a novel fluorescent dopamine sensor (dLight) with fast-scan cyclic voltammetry in cortex and striatum  
**National Institute on Alcohol Abuse and Alcoholism**  
*Postdoctoral Fellow*

## Natascha Schaefer

III 53

The GLRB mouse mutant spastic — model system to study agoraphobic behavior

**University Hospital Wuerzburg/Institute for Clinical Neurobiology**

*Postdoctoral Fellow*

## Alec Sheffield

III 52

Transcranial static magnetic field stimulation of the dorsolateral prefrontal cortex has region specific effects on neural oscillations

**Massachusetts Institute of Technology**

*Undergraduate Student*

## Rachael Stein

III 51

Hippocampal deletion of sodium channel Nav1.1 causes thermally evoked seizures and spatial learning deficits in a mouse model of Dravet Syndrome

**University of Washington**

*Graduate Student*

## Marie-Kim St-Pierre

III 50

Identification of a dark microglia specific marker

**Université Laval**

*Graduate Student*

## Alejandro Torrado Pacheco

III 49

Sleep temporally segregates the expression of downward firing rate homeostasis *in vivo*

**Brandeis University**

*Graduate Student*

## Dylan Verden

III 48

Nrf2 function in oligodendrocyte development and injury responses

**University of Colorado, Anschutz Medical Campus**

*Graduate Student*

## Caitlin Wotton

III 47

Contribution of astrocytic purinergic signalling in serotonin neuromodulation

**University of Saskatchewan**

*Graduate Student*

## C: Neurodegenerative Disorders and Injury

### Nicholas Batty

III 46

Electrical stimulation to promote plasticity in the injured corticospinal tract

**University of Alberta**

*Graduate Student*

### Nicolas Belforte

III 45

Early neuronal pathogenesis and dysfunction by the activation of AMP-activated protein kinase — mammalian target of rapamycin pathway

**University of Montreal Hospital Research Center (CRCHUM)**

*Postdoctoral Fellow*

### Brandon Berkemeier

III 44

Pain-like withdrawal responses to conditioned auditory cues associated with repeated von Frey stimuli in two rat models of neuropathic pain

**University of Cincinnati College of Medicine**

*Undergraduate Student*

### Molly Braun

III 43

Remote ischemic post-conditioning accelerates hematoma resolution after intracerebral hemorrhage by modulating innate immune activation

**Medical College of Georgia**

*Graduate Student*

- Saranya Canchi** III 42  
 Comparison of gene expression profile of Alzheimer's disease using modular maximization reveals role of EGR3  
**University of California, San Diego**  
*Postdoctoral Fellow*
- Randall Carpenter** III 41  
 Bad to the bone: Spinal cord injury disrupts hematopoietic and immune cell function in the bone marrow niche  
**The Ohio State University**  
*Graduate Student*
- Amanda Cheung** III 40  
 Diagnostic and prognostic potential of serum and CSF UCHL-1 in acute traumatic spinal cord injury  
**University of British Columbia/ICORD**  
*Graduate Student*
- Jonathon Chio** III 39  
 Drug Repurposing: High Dose Human Intravenous Immunoglobulin G for Treatment of tTraumatic Cervical Spinal Cord Injury  
**University of Toronto**  
*Graduate Student*
- Stephanie Ciarlone** III 38  
 Alterations in amyloid beta peptide levels following subclinical blast overpressure exposure in a rodent model of traumatic brain injury  
**Naval Medical Research Center**  
*Postdoctoral Fellow*
- Marangelie Criado-Marrero** III 37  
 High FKBP52 levels cause tau aggregation leading to hippocampal-dependent memory impairments  
**University of South Florida**  
*Postdoctoral Fellow*
- Julia Crone** III 36  
 Are changes in time-varying network dynamics truly driven by consciousness?  
**University of California, Los Angeles**  
*Postdoctoral Fellow*
- Jean-Christophe Delpesch** III 35  
 P2X7R inhibitor blocks exosome secretion and delays proteopathic tau accumulation in P301S tau mice  
**Boston University**  
*Graduate Student*
- Beatriz Garcia-Diaz** III 34  
 Blood vessels guide Schwann cell migration in the adult demyelinated CNS through Eph/Ephrin signaling  
**Institut du Cerveau et de la Moelle Épière (ICM)**  
*Postdoctoral Fellow*
- Emily Gilbert** III 33  
 Using metformin to activate endogenous precursor cells in the spinal cord  
**University of Toronto**  
*Postdoctoral Fellow*
- Jenna Glatzer** III 32  
 Oligodendrocyte dysfunction and c9orf72 als  
**Johns Hopkins University School of Medicine**  
*Graduate Student*
- Albina Ibrayeva** III 31  
 Origins of age-related neurogenesis decline  
**University of Southern California**  
*Graduate Student*
- Deepak Kaushik** III 30  
 Glycolysis drives leukocyte migration and subsequent neuropathology in an animal model of multiple sclerosis  
**University of Calgary**  
*Postdoctoral Fellow*



## Shahrnaz Kemal

Absence of tau does not prevent dystrophic neurite formation in two Alzheimer's disease mouse models

**Northwestern University**

*Postdoctoral Fellow*

III 29

## Raza Malik

A novel task to measure lower limb coordination after spinal cord injury and its relation to proprioceptive sense

**University of British Columbia**

*Graduate Student*

III 23

## Haneui Kim

Western diet impedes recovery after experimental spinal cord injury

**Mayo Clinic**

*Postdoctoral Fellow*

III 28

## Marta Maltese

Differential modulation of striatal projection neurons following dopamine loss and replacement

**New York University Medical Health**

*Postdoctoral Fellow*

III 22

## Jacqueline Kulbe

Neuroprotective strategies following experimental traumatic brain injury: Inhibition of mitochondrial permeability transition, lipid peroxidation-derived neurotoxic aldehyde scavenging and monoamine oxidase inhibition

**University of Kentucky**

*Graduate Student*

III 27

## Jose Martinez

Building a plausible model for tdp-43 driven als/ftd pathology

**University of Wisconsin**

*Graduate Student*

III 21

## Mantosh Kumar

Attenuation of excitotoxicity induced molecular changes by NMDAR inhibitors

**Rajiv Gandhi Centre for Biotechnology, Thiruvananthapuram**

*Graduate Student*

III 26

## Paola Meade

Human cerebrospinal fluid induces an increase in proliferation of glioblastoma cells *in vitro* and *in vivo*

**Anahuac University**

*Undergraduate Student*

III 20

## Harald Lund

Dysregulation of TGF-beta signaling in monocyte-derived macrophages results in fatal neurodegeneration

**Karolinska Institutet**

*Postdoctoral Fellow*

III 25

## Ari Mendell

Finasteride differentially impacts dendritic morphology of hippocampal neurons and impairs object recognition memory in male 3xTg-AD mice

**University of Guelph**

*Graduate Student*

III 19

## Ian Mahar

Subgenual anterior cingulate white matter and depressive etiology in chronic traumatic encephalopathy

**Boston University**

*Postdoctoral Fellow*

III 24

## Daniel Moreno Blas

Autophagy dysfunction during neuronal senescence

**National Autonomous University of Mexico (UNAM)**

*Graduate Student*

III 18

- Brandie Morris** III 17  
Poly-GR expression in a novel mouse model of C9orf72-ALS  
**Thomas Jefferson University**  
*Graduate Student*
- Elizabeth Nguyen** III 16  
Hypothalamic-pituitary-adrenal axis hyperactivity precedes cognitive impairments in female mice genetically vulnerable to Alzheimer's disease  
**University of Cincinnati College of Medicine**  
*Graduate Student*
- Maria Nguyen** III 15  
LRRK2 phosphorylation of auxilin mediates synaptic defects in dopaminergic neurons from patients with Parkinson's disease  
**Northwestern University**  
*Graduate Student*
- David Nowak** III 14  
Combined pro-regenerative strategies and targeted rehabilitation to improve behavioral outcomes after spinal cord injury  
**Marquette University**  
*Undergraduate Student*
- Daniel Ojeda Juárez** III 13  
Lipocalin-2 deficiency limits alterations of neurotransmission-related gene networks in a transgenic model of HIV-induced brain injury  
**Sanford Burnham Prebys Medical Discovery Institute**  
*Graduate Student*
- Anthony Oppong-Gyebi** III 12  
Influence of ovarian hormone deprivation length on the neuroprotective effects of genistein in stroke  
**University of North Texas Health Science Center**  
*Graduate Student*
- Laura Palmer** III 11  
Amyloid  $\beta$  reduces pannexin-1 channel opening during ischemia through a novel mGluR1-mediated mechanism  
**University of Calgary**  
*Graduate Student*
- Karen Parra** III 10  
Hippocampal neuropathology in patients with seizures secondary to multiple sclerosis  
**University of California, Riverside**  
*Undergraduate Student*
- Andrée-Anne Poirier** III 9  
Therapeutic repurposing of dutasteride as an immunomodulatory drug for the treatment of gut inflammation in a mouse model of Parkinson's disease  
**Laval University**  
*Graduate Student*
- Ayumi Pottenger** III 8  
Evaluating the effects of sub-anesthetic ketamine on microglia morphology in a pre-clinical model of L-DOPA induced dyskinesia  
**University of Arizona**  
*Undergraduate Student*
- Daniel Quesada-Yamasaki** III 7  
Chronic corticosterone administration without posterior immune challenge induces depressive-like behavior and microglia priming but not proliferation in young adult and middle-aged rats  
**University of Costa Rica**  
*Undergraduate Student*
- Pilar Rivero-Ríos** III 6  
Pathogenic LRRK2 alters endolysosomal trafficking through impairing Rab8a function  
**IPBLN-CSIC**  
*Graduate Student*

## Madeline Ross

III 5

Astrocytes determine pathway of cell death triggered by oxidative stress in neurons

**Boston University**

*Undergraduate Student*

## Jessika Royea

III 4

Angiotensin II type 2 receptors' role in a mouse model of Alzheimer's disease

**McGill University**

*Graduate Student*

## Marissa Schaffer

III 3

Circulating GDF11 is associated with cortical thickness, amyloid burden, and cognitive performance

**Mayo Clinic**

*Postdoctoral Fellow*

## Cristina Simon-Martinez

III 2

Functional connectivity of the sensorimotor network is influenced by the corticospinal tract wiring pattern in unilateral cerebral palsy

**University of Leuven – KU Leuven**

*Graduate Student*

## Hailong Song

III 1

Characterization of mitochondrial damage due to low-intensity primary blast injury

**University of Missouri, Columbia**

*Graduate Student*

## Shanshan Song

HHH 61

Selective deletion of Na<sup>+</sup>/H<sup>+</sup> exchanger in Cx3cr1<sup>+</sup> microglia stimulates white matter myelination and improves post-stroke function recovery

**University of Pittsburgh**

*Postdoctoral Fellow*

## Ann Van der Jeugd

HHH 60

Reversal of memory and neuropsychiatric symptoms and reduced tau pathology by selenium in 3xTg-AD mice

**KU Leuven**

*Postdoctoral Fellow*

## Susanne Van Veluw

HHH 59

Vasoactivity as the driving force for paravascular clearance in the awake Alzheimer model mouse brain

**Massachusetts General Hospital/  
Harvard School of Medicine**

*Postdoctoral Fellow*

## Hai Vo

HHH 58

Klotho regulates the activity of hippocampal neurons

**University of Alabama at Birmingham**

*Graduate Student*

## Katharine von Herrmann

HHH 57

Neurogenic inflammation resulting from expression of constitutively activated NLRP3 in mesencephalic dopamine neurons

**Geisel School of Medicine at Dartmouth**

*Graduate Student*

## Philippa Warren

HHH 56

The effects of chronic paralysis on the mechanical properties and fibre-type composition of the diaphragm

**University of Leeds**

*Postdoctoral Fellow*

## Kobi Wasner

HHH 55

Investigating a novel role for parkin in mitochondrial dna maintenance in induced pluripotent stem cell-derived neurons from Parkinson's disease patients

**Université du Luxembourg**

*Graduate Student*

## Alison Weiss

HHH 54

Assessing altered cortico-basal ganglia circuitry in a novel AAV-mediated non-human primate model of Huntington's disease  
**Oregon Health & Science University**  
*Postdoctoral Fellow*

## Chung-Yang Yeh

HHH 53

Neuroprotection by small molecule inhibition of Kv2.1/syntaxin interaction  
**University of Pittsburgh**  
*Graduate Student*

## Alexis Ziemba

HHH 52

Characterization of a hypothermic coating to target cortical neuroinflammation  
**Rensselaer Polytechnic Institute**  
*Graduate Student*

## D: Sensory Systems

### Rachel Barborek

HHH 51

Identifying the molecular components of cold nociception in *Drosophila melanogaster*  
**James Madison University**  
*Undergraduate Student*

### Sampurna Chakrabarti

HHH 50

Role of transient receptor potential (TRP) channels in acute inflammatory knee pain  
**University of Cambridge**  
*Graduate Student*

### Sisi Chen

HHH 49

Inflammatory and neuropathic pain enhances neural excitability and synaptic transmission in a population of GRM2+ neurons in anterior cingulate cortex  
**University of Cincinnati**  
*Postdoctoral Fellow*

## Jolande Fooker

HHH 48

Eye and hand movement characteristics during rapid go/no-go decisions in Parkinson's disease  
**University of British Columbia**  
*Graduate Student*

## Emma Holmes

HHH 47

Understanding speech in background noise relies on similar processes to figure-ground segregation  
**University College London**  
*Postdoctoral Fellow*

## Suraj Honnuraiah

HHH 46

Cellular and circuit mechanisms underlying processing of binocular visual information in visual cortex  
**Australian National University**  
*Graduate Student*

## Kathleen Hupfeld

HHH 45

Neural correlates of vestibular processing during exposure to a spaceflight analog with elevated carbon dioxide  
**University of Florida**  
*Graduate Student*

## Ethan Knights

HHH 44

Hand-selective areas of both dorsal and ventral visual streams represent how to appropriately grasp 3D tools  
**University of East Anglia**  
*Graduate Student*

## Yuanning Li

HHH 43

Pre-stimulus endogenous activity modulates category tuning and influences perceptual behavior  
**Carnegie Mellon University**  
*Graduate Student*

## Kristyn Lizbinski

HHH 42

Multiple neuromodulators influence odor coding via distinct mechanisms

**West Virginia University**

*Graduate Student*

## Elora Midavaine

HHH 41

Therapeutic gene modulation of the CCR2 chemokine receptor confers analgesia and anti-proliferative activity in a rat model of cancer-induced bone pain

**Université de Sherbrooke**

*Graduate Student*

## Shreyas Mysore

### Suryanarayana

HHH 40

Sensory organization in the primordial lamprey cortex

**Karolinska Institutet**

*Graduate Student*

## Jacquelyn Omelian

HHH 39

Developmental differences in immune response to gustatory nerve loss

**University of Nebraska at Omaha**

*Graduate Student*

## Natalie Ortiz-Vega

HHH 38

Retinal albinism and abnormal electroretinograms in VAMP7 null

**Universidad de Puerto Rico, Bayamon**

*Undergraduate Student*

## Nicole Pacchiarini

HHH 37

Discrimination learning with tactile stimuli in rodents

**Cardiff University**

*Graduate Student*

## Atit Patel

HHH 36

Cellular and behavioral requirements for calcium induced calcium release mechanisms in cold nociception

**Georgia State University**

*Graduate Student*

## Tim Rohe

HHH 35

The pre- and post-stimulus dynamics of the brain's multisensory causal inferences

**University of Tuebingen**

*Postdoctoral Fellow*

## Francisco Sacadura

HHH 34

Thermal grill model of human pain perception facilitates late but not early somatosensory evoked potentials

**University College London**

*Undergraduate Student*

## Joshua Sanchez

HHH 33

Characterizing the pathological effects of prenatal alcohol exposure on spinal neuroimmune mechanisms that result in neuropathic touch sensitivity

**University of New Mexico**

*Graduate Student*

## Takuma Sonoda

HHH 32

A subpopulation of GABAergic intrinsically photosensitive retinal ganglion cells in the mouse retina

**Northwestern University**

*Graduate Student*

## E: Motor Systems

### Matthew Becker

HHH 31

Graded and bidirectional control of real-time reach kinematics by the cerebellum

**University of Colorado**

*Graduate Student*

### Justin Brantley

HHH 30

Noninvasively recorded human cortical dynamics during level-ground, incline, and stair locomotion

**University of Houston**

*Graduate Student*

## Digna de Kam

HHH 29

Do performance errors and environmental switches regulate generalization of learned locomotor features across contexts?

**University of Pittsburgh**

*Postdoctoral Fellow*

## Shlomi Haar

HHH 28

Neurobehavioural imaging of natural motor learning in a complex human skill

**Imperial College London**

*Postdoctoral Fellow*

## Masaaki Hayashi

HHH 27

Promoting excitability of corticospinal tracts from a targeted hemisphere through interplay with EEG-based brain-computer interface

**Keio University**

*Graduate Student*

## Elena Kokkoni

HHH 26

Merging enriched environments and assistive technology to enhance early exploratory and motor activity in young children

**University of Delaware**

*Postdoctoral Fellow*

## Liu Liu

HHH 25

Mesoscale analysis of decision making, motor planning and movement initiation

**Baylor College of Medicine**

*Postdoctoral Fellow*

## Yin Liu

HHH 24

Molecular and functional diversity of pulmonary sensory neurons revealed by single-cell RNA sequencing

**Stanford University**

*Postdoctoral Fellow*

## Brianna Marsh

HHH 23

Decoding the neural substrates of intent to speak

**The University of Kansas**

*Undergraduate Student*

## J. Patrick Mayo

HHH 22

The relative contributions of area MT and the frontal eye fields to the latency of smooth pursuit

**Duke University**

*Postdoctoral Fellow*

## Ayuno Nakahashi

HHH 21

Fronto-parietal neural activity during multi-attribute decision-making with conflicting value information

**University of Montreal**

*Graduate Student*

## Alica Rogojin

HHH 20

Sex-related differences in the relationship between dementia risk and cognitive-motor integration performance

**York University**

*Graduate Student*

## Naveen Sendhilnathan

HHH 19

Mid-lateral cerebellar Purkinje neurons participate in visuomotor associative learning

**Columbia University**

*Graduate Student*

## Jared Smith

HHH 18

Whole-brain mapping of the input-output organization of claustrum implies its functional role as a limbic-motor interface

**Salk Institute for Biological Studies**

*Postdoctoral Fellow*

## Rini Varghese

HHH 17

Interlimb differences during bimanual aiming after stroke: Effect of target distance

**University of Southern California**

*Graduate Student*

# F: Integrative Physiology and Behavior

**Amber Alhadeff** HHH 16

Hunger inhibits inflammatory pain through a hypothalamic-hindbrain peptidergic circuit

**University of Pennsylvania**  
*Postdoctoral Fellow*

**Alexandria Beland** HHH 15

The effect of GLUT1 and MCT1 inhibition on cerebral glucose and lactate levels following intraperitoneal injections of metabolic fuels in mice

**University of Ottawa**  
*Graduate Student*

**Olga Borodovitsyna** HHH 14

Age- and stress-dependent changes in locus coeruleus physiology and anxiety-like behavior

**Rowan University GSBS**  
*Graduate Student*

**Julie Butler** HHH 13

Reproductive state dependent visual sensitivity in an African cichlid fish

**Louisiana State University**  
*Graduate Student*

**Cali Calarco** HHH 12

Nicotinic acetylcholine receptors in the arcuate nucleus and their implications for feeding behavior

**Yale University**  
*Postdoctoral Fellow*

**Patricia Cintora** HHH 11

Early life emotional neglect predicts shorter telomere length in adulthood

**University of Illinois at Urbana-Champaign**  
*Graduate Student*

**Michael Elbaz** HHH 10

Closed- and open-loop control of fine whisker movements

**Université Laval**  
*Graduate Student*

**Sedona Ewbank** HHH 9

The role of AgRP neurons in shaping the composition and energy harvest capacity of the gut microbiota

**University of Washington**  
*Undergraduate Student*

**Sarah Framnes** HHH 8

The effect of bromocriptine, a D2 receptor agonist, in lean and obese mice

**Marquette University**  
*Graduate Student*

**Katherine Hatcher** HHH 7

Two models of circadian disruption modify locomotor activity and circadian clock gene expression in the suprachiasmatic nucleus of male and female Long-Evans rats

**University of Illinois at Urbana-Champaign**  
*Graduate Student*

**Marques Jackson** HHH 6

Regional examination of glucocorticoid receptors and endogenous opioid signaling genes in self-injurious behavior

**University of Louisiana at Lafayette**  
*Graduate Student*

**Daniel Lee** HHH 5

Evolutionarily conserved regulation of sleep by epidermal growth factor receptor signaling

**California Institute of Technology**  
*Postdoctoral Fellow*

## Peng Li

HHH 4

Brain correlates of fractal regulation in motor activity — Results from the Rush Memory and Aging Project

**Harvard Medical School/Brigham & Women's Hospital**

*Postdoctoral Fellow*

## Megan Linscott

HHH 3

Tet1 regulates Fgf8 expression in the developing hypothalamus during gonadotropin-releasing hormone neuron emergence

**Kent State University**

*Graduate Student*

## Trevor McPherson

HHH 2

Physiological correlates of the ANS and HPA-axis in active and passive music therapy interventions

**University of North Carolina at Chapel Hill**

*Undergraduate Student*

## Mackenna Mejdell

HHH 1

Sex-specific effects of endocannabinoid action on cued fear conditioning and extinction

**Northeastern University**

*Undergraduate Student*

## Dulce Minaya Caba

GGG 27

Roux-en-Y and vagotomy increase DNA fragmentation in vagal afferent neurons of rats within 24h

**University of Georgia**

*Postdoctoral Fellow*

## Kathleen Morrison

GGG 26

Epigenetic programming of chromatin accessibility by stress during puberty

**University of Maryland School of Medicine**

*Postdoctoral Fellow*

## Amy Nelson

GGG 25

Regulating pericytes with optogenetics

**University of Southern California**

*Postdoctoral Fellow*

## Mariana Rodriguez Santiago

GGG 24

Social network effects on learning and neural processing of a visual cue discrimination task

**The University of Texas at Austin**

*Graduate Student*

## Loranzie Rogers

GGG 23

The effect of self-generated movement on lateral line sensitivity in the toadfish, *Opsanus tau*

**University of Minnesota, Duluth**

*Graduate Student*

## Marc Schneeberger Pane

GGG 22

Dorsal raphe nucleus gabaergic neurons control adaptive thermogenesis

**The Rockefeller University**

*Postdoctoral Fellow*

## Kristina Smiley

GGG 21

Identifying prolactin-responsive neurons important for the transition to paternal care

**University of Otago**

*Postdoctoral Fellow*

## Stefanos Stagkourakis

GGG 20

Maternal aggression depends on a prolactin- and oxytocin-sensitive switch in ventral preamillary nucleus (PMv) network behavior

**Karolinska Institutet, Biomedicum**

*Graduate Student*

## Kathryn West

GGG 19

Neural-vascular uncoupling mediates motor performance decline in multiple sclerosis

**University of Texas at Dallas**

*Postdoctoral Fellow*



## Tiffany Yang

GGG 18

Exercise-induced neuronal activation differs following acute and chronic exposure to wheel running

**University of Illinois at Urbana-Champaign**  
*Graduate Student*

## G: Motivation and Emotion

### Elisabeth Abs

GGG 17

Learning-related plasticity of dendritic inhibition in neocortical layer 1

**Max Planck Institute for Brain Research**  
*Graduate Student*

### Ibukun Akinrinade

GGG 16

Oxytocin regulation of social buffering and social contagion of fear in zebrafish

**Instituto Gulbenkian de Ciencia**  
*Graduate Student*

### Charlotte Bavley

GGG 15

Prelimbic to accumbens core projection in reinstatement of cocaine conditioned place preference: role of Cav1.2 L-type calcium channels

**Weill Cornell**  
*Graduate Student*

### Sriya Bhattacharya

GGG 14

Pre-conception predator stress induces physiological and behavioral changes in offspring

**Memorial University**  
*Graduate Student*

### Jennifer Blaze

GGG 13

The role of NSUN2-mediated tRNA methylation in the adult mouse cortex on depressive- and anxiety-like behavior

**Icahn School of Medicine at Mt. Sinai**  
*Postdoctoral Fellow*

## Jordan Carter

GGG 12

Long-term impact of acute stress on cognition, anxiety, and reinstated heroin seeking in male and female rats

**Medical University of South Carolina**  
*Graduate Student*

## Victor Cazares

GGG 11

Neural mechanisms underlying impaired extinction learning in a wild-type inbred mouse strain

**University of Michigan**  
*Postdoctoral Fellow*

## David Clewett

GGG 10

Brain mechanisms by which emotional learning selectively and retroactively enhances memory for related information

**New York University**  
*Postdoctoral Fellow*

## Kara Cover

GGG 9

Contribution of the rostral intralaminar thalamic nuclei to striatal physiology and behavior

**University of Maryland School of Medicine**  
*Graduate Student*

## Kirstie Cummings

GGG 8

Prefrontal somatostatin interneurons encode memory through disinhibition

**Icahn School of Medicine at Mt. Sinai**  
*Postdoctoral Fellow*

## Johannes de Jong

GGG 7

A neural circuit mechanism for coding negative motivational stimuli in the mesolimbic dopamine system

**University of California, Berkeley**  
*Postdoctoral Fellow*

## Elizabeth Doncheck

GGG 6

Prelimbic cortical estrogen receptor contributions to 17 $\beta$ -estradiol-potentiated reinstatement of cocaine-seeking behavior in female rats

**Marquette University**

*Graduate Student*

## Stacey Kigar

FFF 24

Adaptive immune signaling at the meningeal barrier: neuroimmune interactions underlying stress-induced mood disruption

**National Institutes of Health**

*Postdoctoral Fellow*

## Mehdi Farokhnia

GGG 5

A deeper insight into how GABA-B receptor agonism via baclofen may affect alcohol seeking and consummatory behaviors: Lessons learned from a human laboratory investigation

**National Institute on Alcohol Abuse and Alcoholism; National Institute on Drug Abuse**

*Postdoctoral Fellow*

## Alexandros Kokkosis

FFF 23

Chronic stress compromises the NG2-glia cellular homeostasis in a murine depression model

**Stony Brook University**

*Graduate Student*

## Kurt Fraser

GGG 4

Dynamic regulation of cue-triggered reward seeking by the basolateral amygdala and orbitofrontal cortex

**Johns Hopkins University**

*Graduate Student*

## Michelle Land

FFF 22

Cys23Ser single nucleotide polymorphism alters function and localization of the serotonin 2C Receptor (5-HT<sub>2C</sub>R) *in vitro*

**University of Texas Medical Branch**

*Graduate Student*

## Madalyn Hafenbreidel

GGG 3

The effect of nonmuscle myosin II inhibition on polydrug memories and reconsolidation

**The Scripps Research Institute**

*Postdoctoral Fellow*

## Casey Lardner

FFF 21

Elucidating the cell type-specific transcriptional patterns differentiating stimulant versus opiate addiction

**Icahn School of Medicine at Mt. Sinai**

*Graduate Student*

## Peter Hamilton

GGG 2

Endogenous and CRISPR-mediated CREB-Zfp189 interactions regulate a resilient-specific transcriptional network in mouse models of depression

**Icahn School of Medicine at Mt. Sinai**

*Postdoctoral Fellow*

## Jennifer Lissemore

FFF 20

Combining transcranial magnetic stimulation and machine learning to predict treatment outcome in late-life depression

**University of Toronto**

*Graduate Student*

## Ann Hoffman

GGG 1

Projection specific mechanisms of auditory sensitivity that contribute to enhanced fear after TBI

**University of California, Los Angeles**

*Postdoctoral Fellow*

## Alessia Mastrodonato

FFF 19

Prophylactic ketamine protects against fear overgeneralization

**Columbia University**

*Postdoctoral Fellow*

## Nora McCall

FFF 18

Selective manipulation of inhibitory signaling in dopamine neurons of the ventral tegmental area alters behavioral response to cocaine

**University of Minnesota**

*Graduate Student*

## Philipp Mews

FFF 17

Mechanisms of epigenetic priming in cocaine addiction

**Icahn School of Medicine at Mt. Sinai**

*Postdoctoral Fellow*

## Habiba Noamany

FFF 16

Optogenetic activation of medial prefrontal cortex projections to the dorsal periaqueductal gray decreases reward consumption

**Massachusetts Institute of Technology**

*Undergraduate Student*

## Chloe Page

FFF 15

Effects of chemogenetic inhibition of prefrontal parvalbumin interneurons on emotional and cognitive behaviors following chronic stress exposure

**The Ohio State University**

*Graduate Student*

## Rachel Pearcy

FFF 14

Characterization of mice lacking galanin in noradrenergic neurons

**Emory University**

*Graduate Student*

## Thomas Prevot

FFF 13

Anxiolytic, antidepressant and pro-cognitive properties of novel positive allosteric modulators at  $\alpha 5$ -containing GABAA receptors

**University of Toronto**

*Postdoctoral Fellow*

## Jimit Raghav

FFF 12

AM7438, a novel controlled deactivation cannabinoid with reduced tolerance and dependence profiles

**Northeastern University**

*Graduate Student*

## Amanda Russo

FFF 11

Phosphorylation of mitogen-activated protein kinase in the medial prefrontal cortex is associated with individual variation in extinction recall in rats

**Stony Brook University**

*Graduate Student*

## Dennis Sholler

FFF 10

The 5-HT<sub>2A</sub> receptor (5-HT<sub>2AR</sub>) antagonist/inverse agonist pimavanserin suppresses impulsive action and cocaine cue reactivity in rats

**University of Texas Medical Branch**

*Graduate Student*

## Elizabeth Sneddon

FFF 9

A chemogenetic investigation of striatal and cortical contributions to aversion-resistant alcohol drinking

**Miami University**

*Graduate Student*

## Konstantina Theofanopoulou

FFF 8

The effect of social reward in vocal learning: Testing an oxytocin-dependent mechanism

**Universitat de Barcelona**

*Graduate Student*

## Kevin Uribe

FFF 7

Overexpression of a stress peptide in the nucleus accumbens selectively increases nicotine self-administration in female versus male rats

**The University of Texas at El Paso**

*Graduate Student*

## Yentl van der Zee

FFF 6

Sex specific role for Slit1 in regulating susceptibility to chronic stress

**Maastricht University**

*Graduate Student*

## Rachel Walker

FFF 5

Comparisons of vIPAG cell body and midline/intralaminar thalamus terminal inhibition in positive prediction error signaling

**Boston College**

*Graduate Student*

## Alonzo Whyte

FFF 4

$\beta$ 1-integrin during adolescence supports complex decision making and confers resilience to cocaine-seeking behavior in adulthood

**Emory University**

*Postdoctoral Fellow*

## Kathryn Windsor

FFF 3

Structural and functional changes of input-specific excitatory synapses on nigral dopamine cells caused by cocaine

**Trinity University**

*Undergraduate Student*

## Kristina Wright

FFF 2

Optogenetic inhibition of caudal substantia nigra globally inflates fear in multi-cue Pavlovian discrimination

**Boston College**

*Graduate Student*

## Yafang Zhang

FFF 1

Activation of amylin receptors in the nucleus accumbens shell reduces voluntary oxycodone taking in rats

**University of Pennsylvania**

*Postdoctoral Fellow*

## Anna Zilverstand

EEE 26

Resting-state connectivity defines neurobiological subtypes underlying different cognitive-emotional profiles in cocaine addiction

**Icahn School of Medicine at Mt. Sinai**

*Postdoctoral Fellow*

## H: Cognition

### Andy Alexander

EEE 25

Retrosplenial and entorhinal cortical representation during visually-based triangulation

**Boston University**

*Postdoctoral Fellow*

### Caitlin Bowman

EEE 24

Tracking the development of specific and generalized representations during concept learning

**University of Oregon**

*Postdoctoral Fellow*

### Iva Brunec

EEE 23

Global and local hippocampal representations during virtual reality spatial navigation

**University of Toronto**

*Graduate Student*

### Lucie Charles

EEE 22

Neural correlates of subjective and objective freedom of choice

**University College London**

*Postdoctoral Fellow*

### Juliet Davidow

EEE 21

Development of prefrontal cortical connectivity and the enduring effect of learned value on cognitive control

**Harvard University**

*Postdoctoral Fellow*

- Elena Dominguez** EEE 20  
Cortical thickness as a predictor of superior memory across the lifespan and in the 90+  
**University of California, Irvine**  
*Graduate Student*
- Marius Cătălin Iordan** EEE 13  
Using closed loop real-time fMRI neurofeedback to induce neural plasticity and influence perceptual similarity  
**Princeton University**  
*Postdoctoral Fellow*
- Maria Eckstein** EEE 19  
Evidence for hierarchically-structured reinforcement learning in humans  
**University of California, Berkeley**  
*Graduate Student*
- Sarah Johnson** EEE 12  
Hippocampal, perirhinal, and lateral entorhinal contributions to mnemonic discrimination in young and aged rats  
**University of Florida**  
*Postdoctoral Fellow*
- Steven Errington** EEE 18  
Microcircuitry of performance monitoring: Laminar structure of visual and conflict monitoring in the supplementary eye field  
**Vanderbilt University**  
*Graduate Student*
- Seth Koslov** EEE 11  
Managing cognitive control for prospective memory in dynamic environments  
**University of Texas at Austin**  
*Graduate Student*
- Jordan Guerguiev** EEE 17  
Biologically plausible deep learning with segregated dendrites and multiplexing  
**University of Toronto, Scarborough**  
*Graduate Student*
- Lukas Kunz** EEE 10  
Cortico-hippocampal communication during goal-directed navigation: Evidence from functional magnetic resonance imaging and intracranial electroencephalography  
**University of Freiburg**  
*Postdoctoral Fellow*
- Laura Gwilliams** DDD 16  
Parsing continuous speech into linguistic representations  
**New York University**  
*Graduate Student*
- Felix Leroy** EEE 9  
Dual gating by vasopressin of hippocampal CA2 soma and presynaptic terminals in lateral septum  
**Columbia University**  
*Postdoctoral Fellow*
- Sarah Haigh** EEE 15  
Abnormal diffusion across the brain in schizophrenia compared to autism  
**Carnegie Mellon University**  
*Postdoctoral Fellow*
- Katherine Moen** EEE 8  
Strengthening spatial reasoning: Elucidating the neural mechanisms associated with mental rotation skill development  
**Louisiana State University**  
*Graduate Student*
- Sam Hall-McMaster** EEE 14  
Understanding why rewards improve cognitive performance using representational similarity analysis  
**Oxford University**  
*Graduate Student*

## Zachary Monge

Age-related changes in memory representational networks

**Duke University**

*Graduate Student*

EEE 7

## Rakib Rayhan

Characterizing dynamic functional connectivity changes following a physiological stressor in Myalgic Encephalomyelitis/Chronic Fatigue Syndrome and Gulf War Illness

**Howard University**

*Graduate Student*

EEE 1

## Matthew Piva

Representation of decision conflict for self and other agents in the dorsomedial prefrontal cortex is consistent across tasks and predicts social attitudes

**Yale University**

*Graduate Student*

EEE 6

## Zeena Rivera

Hippocampus and lateral habenula interact to support delayed alternation performance in rats

**Seattle University**

*Undergraduate Student*

DDD 24

## Nathaniel Powell

How over interpretation of simple behavioral models can lead to unexpected results: In search of the optimal sampling distributions for delay values on the Restaurant Row task

**University of British Columbia**

*Postdoctoral Fellow*

EEE 5

## Samantha Santacruz

Stimulation in primate caudate nucleus modulates striatal and cortical value signals

**University of California, Berkeley**

*Postdoctoral Fellow*

DDD 23

## Stephanie Prince

CA1 neural activity during spatial navigation in the 5XFAD mouse model of Alzheimer's disease

**Emory University**

*Graduate Student*

EEE 4

## Drew Schreiner

The role of the secondary motor cortex in feedback integration to guide decision-making

**University of California, San Diego**

*Graduate Student*

DDD 22

## Athula Pudhiyidath

Hippocampal representations of temporal statistics predict subsequent reasoning

**The University of Texas at Austin**

*Graduate Student*

EEE 3

## Mark Schurgin

Psychological scaling reveals a single parameter framework for visual working memory

**University of California, San Diego**

*Postdoctoral Fellow*

DDD 21

## Adam Ramsaran

Maturation of hippocampal perineuronal nets underlies the ontogeny of memory specificity

**The Hospital for Sick Children**

*Graduate Student*

EEE 2

## Terri Scott

Functional dissociation of language and working memory revealed by pattern analysis of subject-specific conjunction maps

**Boston University**

*Graduate Student*

DDD 20

## Andrew Sheriff

DDD 19

Coherent theta and respiratory oscillations between sensory systems and the hippocampus

**University of Chicago**

*Graduate Student*

## Ethan Solomon

DDD 18

Connectivity-guided choice of intracranial stimulation targets for optimal cognitive enhancement

**University of Pennsylvania**

*Graduate Student*

## Claire Symanski

DDD 17

Odor-place associative memory in the hippocampal-prefrontal network

**Brandeis University**

*Graduate Student*

## Lina Tran

DDD 16

Modeling the impact of neurogenesis on memory formation and stability

**University of Toronto**

*Graduate Student*

## Anna Vongphrachanh

DDD 15

Delay discounting of punishment during economic decision-making in rats

**University of Memphis**

*Graduate Student*

## Krista Wahlstrom

DDD 14

Basolateral amygdala inputs to the medial entorhinal cortex in the consolidation of spatial and cued-response memory

**University of Iowa**

*Graduate Student*

## Liyu Xia

DDD 13

Option transfer in humans enables faster exploration

**University of California, Berkeley**

*Graduate Student*

## Xiyu Zhu

DDD 12

Adolescent stress during critical periods alters the developmental trajectory of hippocampal parvalbumin (PV) interneurons and recapitulates circuit dysfunction implicated in schizophrenia

**University of Pittsburgh**

*Graduate Student*

## I: Techniques

### Hannah Cates

DDD 11

Revealing the chromatin-bound long noncoding RNA landscape of the brain

**Icahn School of Medicine at Mt. Sinai**

*Postdoctoral Fellow*

### Erica Depasquale

DDD 10

KRSA: A user-friendly tool for identifying significant differences in kinase activity from kinome array data

**University of Cincinnati**

*Graduate Student*

### Megan Finnegan

DDD 9

Addressing the atlas concordance problem in fMRI

**University of Illinois at Urbana-Champaign**

*Graduate Student*

### Tomoyuki Mano

DDD 8

CUBIC-Cloud: A point-cloud-based computational framework to analyze, visualize and share data for whole brain profiling by tissue clearing

**The University of Tokyo**

*Graduate Student*

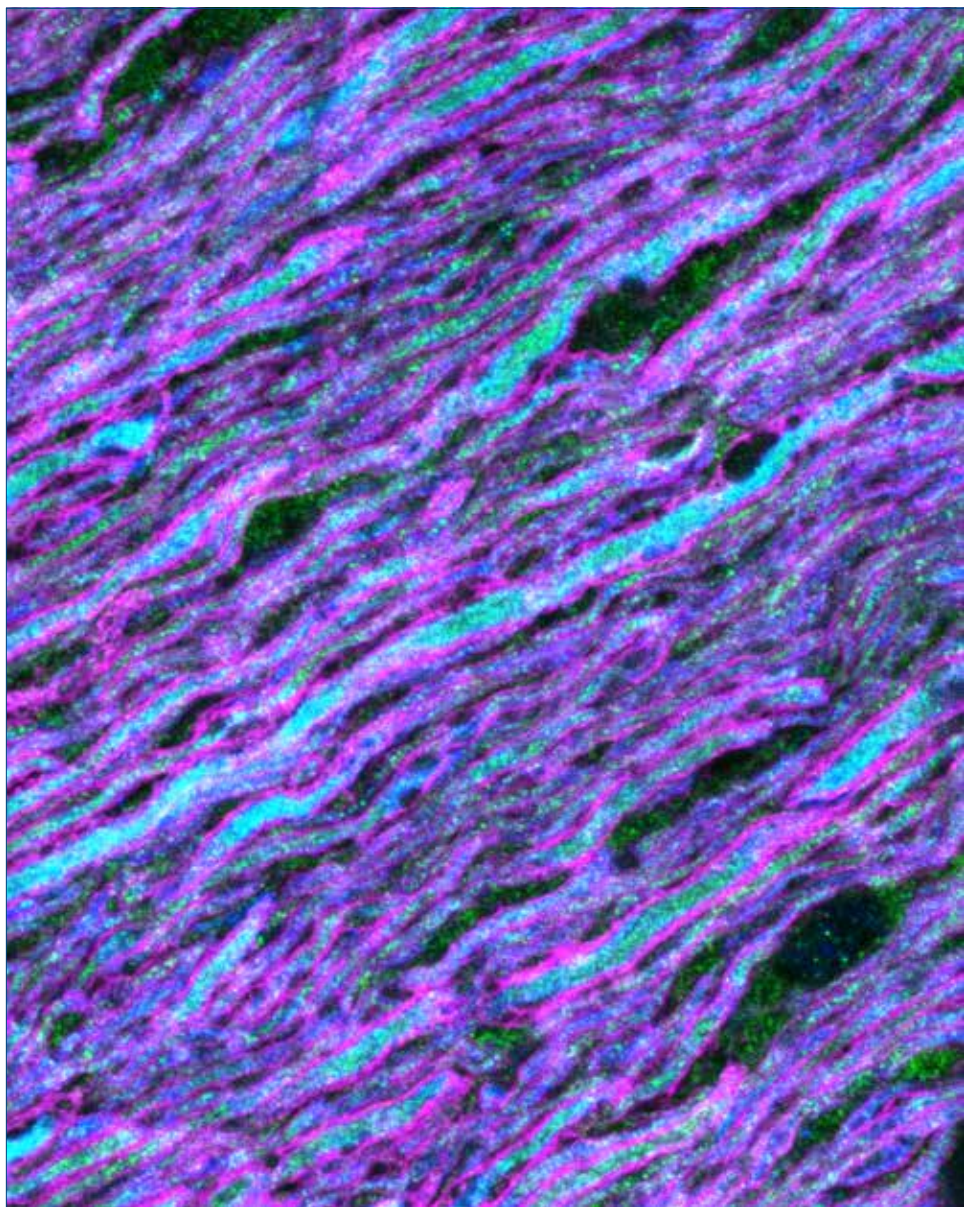
### Emily Warner

DDD 7

Sex differences in behavioral training

**University of Rochester**

*Graduate Student*



**SOCIETY *for***  
**NEUROSCIENCE**

1121 14th Street NW, Suite 1010  
Washington, DC 20005  
[SfN.org](http://SfN.org)